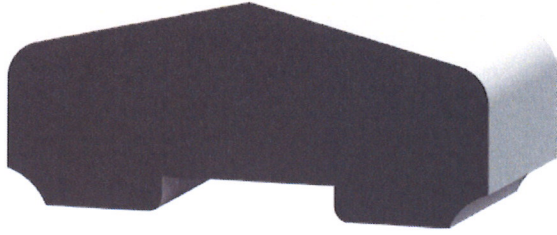
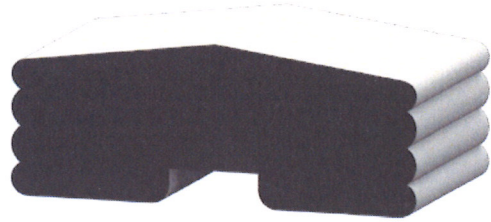


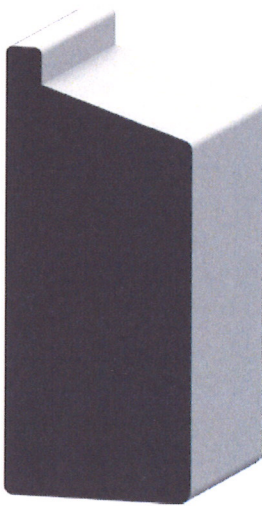
Rails



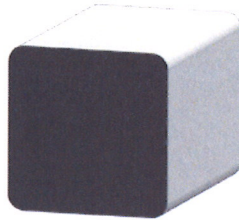
8840 Top Rail
 1-1/2 x 3-1/2
 PRIMED PINE 8' | 16'



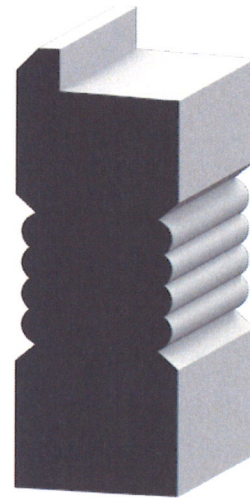
RTOP Richmond Top Rail
 1-1/4 x 3-1/4
 DFIR RL



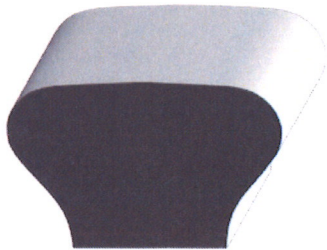
8841 Bottom Rail
 1-1/2 x 3-1/2
 PRIMED PINE 16'



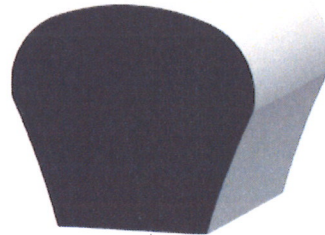
L 237 Baluster
 1-1/4 x 1-1/4
 PRIMED PINE RL



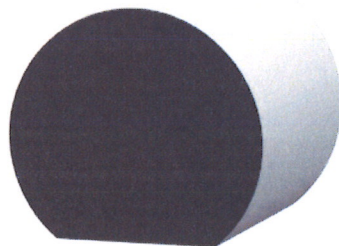
RBOT Richmond Bottom Rail
 1-1/4 x 3-1/4
 DFIR RL



L 230 Hand Rail
 1-1/4 x 2
 DFIR 8' | 12' | 16'
 POPLAR 14' | 16'



230 Hand Rail
 1-1/2 x 1-11/16
 SPINE 16'



231 Wall Rail
 1-1/2 x 1-11/16
 DFIR 8' | 12' | 14' | 16'
 POPLAR 14' | 16'
 SPINE 8' | 12' | 16'



240 Wall Rail
 1-1/4 x 2-1/4
 DFIR 16' | RL
 PRIMED 16'
 SPINE 8' | 12' | 16'

